



REGIONAL SPECIALISED METEOROLOGICAL CENTRE -TROPICAL CYCLONES, NEW DELHI TROPICAL WEATHER OUTLOOK

DEMS-RSMC TROPICAL CYCLONES NEW DELHI DATED 26.06.2025

TROPICAL WEATHER OUTLOOK FOR THE NORTH INDIAN OCEAN (THE BAY OF BENGAL AND THE ARABIAN SEA) VALID FOR THE NEXT 168 HOURS ISSUED AT 0600 UTC OF 26.06.2025 BASED ON 0300 UTC OF 26.06.2025.

BAY OF BENGAL:

Under the influence of yesterday's upper air cyclonic circulation over northwest Bay of Bengal and adjoining coastal areas of north Odisha and West Bengal, a low pressure area formed over the same region at 0300 UTC of today, the 26th June 2025. The associated upper air cyclonic circulation extended upto 7.6 km above mean sea level tilting southwards with height.

It is likely to move west-northwestwards across north Odisha & adjoining Gangetic West Bengal, Jharkhand and Chhattisgarh during next 2 days.

Scattered to broken low and medium clouds with embedded intense to very intense convection lay over north & central Bay of Bengal and north Andaman Sea. Scattered low and medium clouds with embedded moderate to intense convection lay over south Bay of Bengal and south Andaman Sea.

*PROBABILITY OF CYCLOGENESIS (FORMATION OF DEPRESSION) DURING NEXT 168 HRS:

24 HOURS	24-48 HOURS	48-72 HOURS	72-96 HOURS	96-120 HOURS	120-144 HOURS	144-168 HOURS
NIL	NIL	NIL	NIL	NIL	NIL	NIL

*NOTE: EVERY 24HR FORECAST IS VALID UPTO 0300 UTC (0830 IST) OF NEXT DAY

ARABIAN SEA:

Scattered low and medium clouds with embedded moderate to intense convection lay over east Arabian Sea, Gulf of Kutch & Gulf of Cambay, Lakshadweep Islands area, Maldives & Comorin area. Scattered low and medium clouds with embedded weak to moderate convection lay over west Arabian Sea.

*PROBABILITY OF CYCLOGENESIS (FORMATION OF DEPRESSION) DURING NEXT 168 HRS:

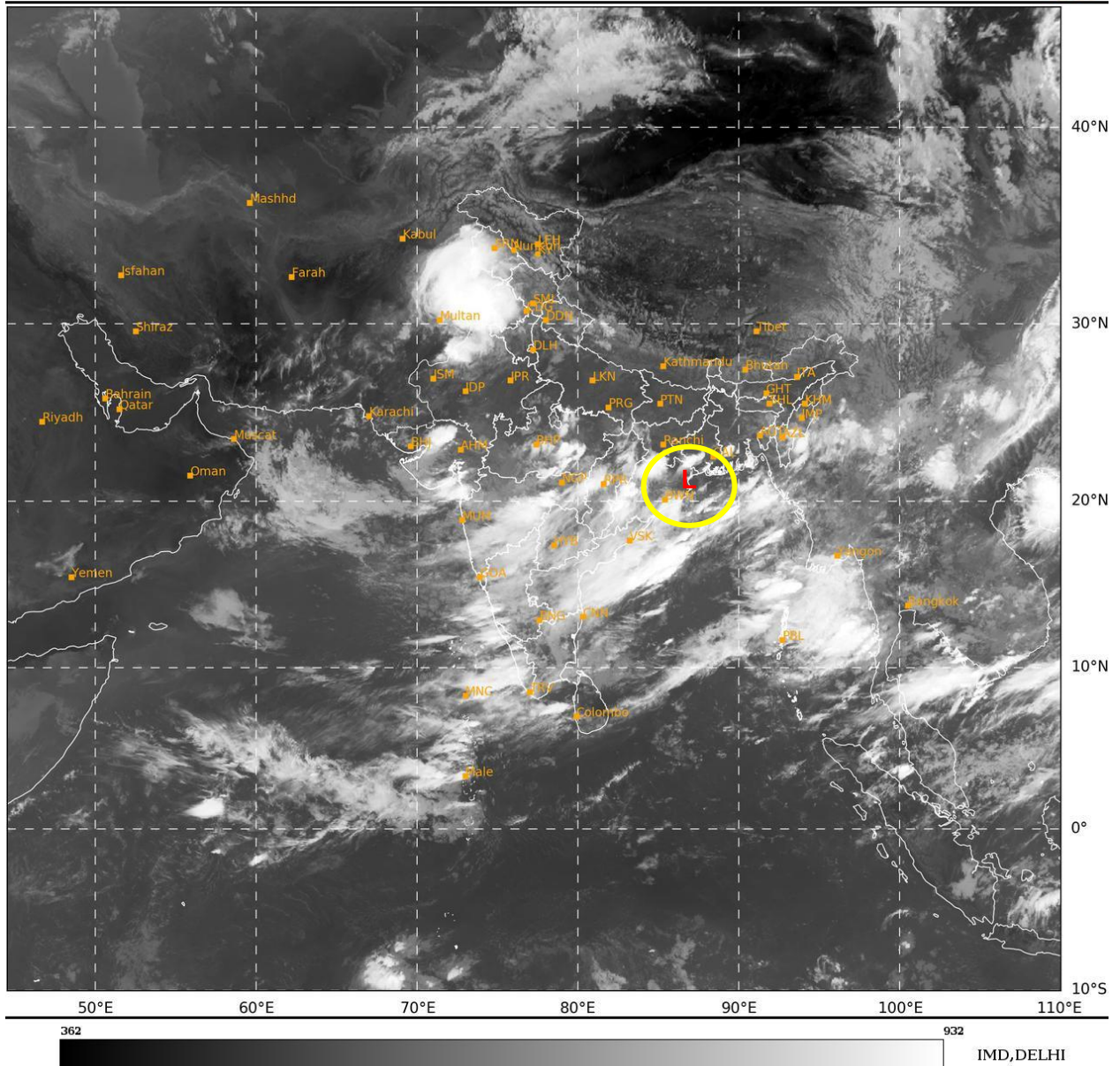
24 HOURS	24-48 HOURS	48-72 HOURS	72-96 HOURS	96-120 HOURS	120-144 HOURS	144-168 HOURS
NIL	NIL	NIL	NIL	NIL	NIL	NIL

*NOTE: EVERY 24HR FORECAST IS VALID UPTO 0300 UTC (0830 IST) OF NEXT DAY

REMARKS: NIL

SAT : INSAT-3DR IMG
IMG_TIR1 10.8 um
L1C Mercator

26-06-2025/(0315 to 0342) GMT
26-06-2025/(0845 to 0912) IST



L: LOW PRESSURE AREA

Cloud distribution: (a) Isolated: <25%, Scattered:25-50%, Broken: 51-75%, Solid:>75%, Convection Intensity: (a) Weak: Cloud Top Temperature(CTT)>-25°C,(b)Moderate:CTT:-25°Cto-40°C,(c)Intense:CTT: -41°Cto -70°Cand(d)Very Intense::Less than -70°C
PROBABILITYOFCYCLOGENESIS(FORMATIONOFDEPRESSION):NIL:0%,LOW:1-33%,MODERATE:34-66%ANDHIGH:67-100%
ThisisaguidanceBulletinforWMO/ESCAPPanelMembercountries.VisitrespectiveNationalwebsitesforCountryspecificBulletins